

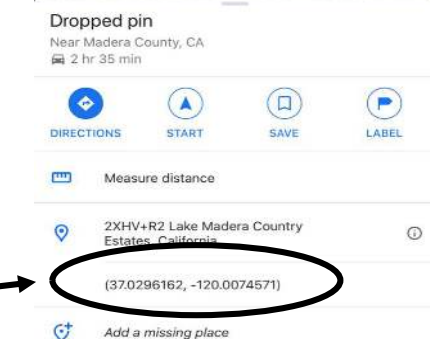
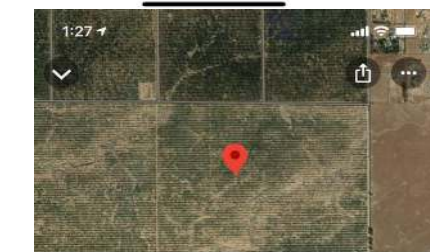
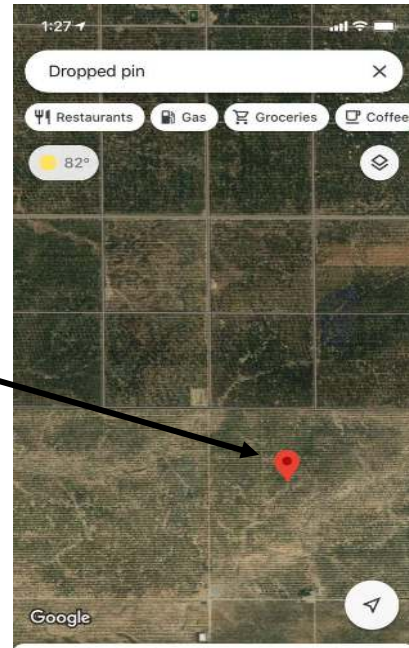
HOW TO FIND THE GPS LOCATION OF A WELL Using Google Maps on your cell phone

1) Open Google Maps and find the location of your well or press the blue arrow on iPhone or the bullseye on Android if you are currently at the location of your well.



2) Create a location pin by pressing your finger on the well position for a full second until a red pin appears.

3) Click in the white box on toward the bottom of the screen where it says dropped pin.



4) The GPS location will appear.
Make sure to write down the whole number sequence.